

Exploring in Colour

Autochromes of the Shackleton-Rowett (Quest) Expedition 1921-22

With colour photography in its infancy, very few colour images were captured on polar expeditions of the early 20th century. The collection of autochromes made by George Hubert Wilkins during the *Quest* expedition, represents the only substantial body of colour photographs of any expedition of the era. The collection of 29 half-plate glass slides is contained in the archive of the family of John Quiller Rowett, the businessman who financed the expedition.

These unique and beautiful images have now been carefully conserved before being digitally captured and painstakingly restored by master printer Georges Charlier of Salto-Ulbeek in Belgium.



The *Quest* autochromes depict a range of scenes from the Shackleton-Rowett Expedition. There are stunning records of *Quest* berthed in St Katharine Docks, prior to departure from London in September 1921, and images of *Quest* anchored in the harbour of Funchal, Madeira. Wilkins went on to capture the magnificent landscapes of South Georgia, and scenes in and around the island's whaling stations. And there are images following Sir Ernest Shackleton's death at Grytviken, at Hope Point where the men of *Quest* constructed the memorial to their late leader in May 1922, and at their visit to the graveside of the explorer, in Grytviken's cemetery.

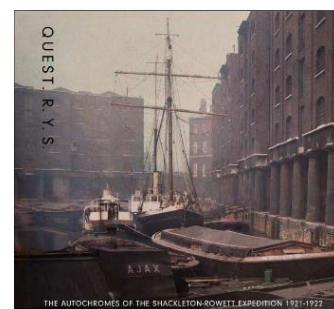
SALTO
ULBEEK

High-quality prints of the *Quest* autochromes, on premium cotton paper, can be purchased from Salto-Ulbeek via <https://salto-ulbeek.com/publishing/the-autochromes-of-the-shackleton-rowett-quest-expedition-1921-1922-prints/>. The prints are available in two sizes: Medium 48 x 61 cm total with border, image size 37 x 50 cm (€240); and Large 61 x 79 cm total with border, image size 50 x 68 cm (€360). Prices are inclusive of VAT but exclusive of P&P and applicable import duties.



Included with orders of prints, or available separately is a highly collectable 24 x 22 cm catalogue of 48 pages containing each of the 30 *Quest* autochromes in their original state, plus 21 of the restored pictures as single-page images.

The autochromes are accompanied by text written by Jan Chojecki, telling their story in the context of the Shackleton-Rowett Expedition, with extracts from the expedition journal of George Hubert Wilkins. This unique volume is printed on high quality 150-gsm paper, with a 250-gsm cover. £25/€30 +P&P if purchased separately.



The story of Shackleton's last expedition and the moments depicted in the *Quest* autochromes are described in *The Quest Chronicle* by Jan Chojecki, grandson of John Quiller Rowett.

More information and availability: questc@btinternet.com and www.questchronicle.org.uk





1. R.Y.S. *Quest* in St Katharine Docks, London, August/September 1921



2. R.Y.S. *Quest* in St Katharine Docks, London, August/September 1921



3. Funchal, Madeira. *Quest* and *Gueydon* in the bay. From the road to Caniçal, 18 October 1921



4. Funchal, Madeira, *Quest* and *Gueydon* in the bay. From the road to Caniçal, 18 October 1921



5. Glacier cliffs and elephant seals. Ice Bay, South Georgia, 10 December 1921



7. Area around Elsa Bay, South Georgia. Albatross nesting, c. 21 December 1921



8. Area around Elsa Bay, South Georgia. Albatross nesting, c. 21 December 1921



10. Area around Elsa Bay, South Georgia. Albatross nesting, c. 21 December 1921



11. Area around Elsa Bay, South Georgia. Albatross nesting, c. 21 December 1921



12. The "miniature waterfall", Elsa Bay area, South Georgia, 27 December 1921



13. Prince Olav Harbour, South Georgia, 2 January 1922



14. Whale carcasses in Prince Olav harbour, South Georgia, 2 January 1922



15. Whale carcasses in Prince Olav harbour, South Georgia, 2 January 1922



16. The flensing platform, Prince Olav Harbour, South Georgia, 2 January 1922



17. Three Brothers mountains, Allardyce Range South Georgia, 28 April 1922



18. Three Brothers mountains, Allardyce Range South Georgia, 28 April 1922



20. Shackleton's Trail, inland from Leith and Husvik, South Georgia, 28 April 1922



21. Sunset over the mountains, inland South Georgia, 28 April 1922



22. Crew of *Quest* at Shackleton's cairn, Hope Point, King Edward Cove, South Georgia, 5 May 1922



23. Crew of *Quest* at Shackleton's cairn, Hope Point, King Edward Cove, South Georgia, 5 May 1922



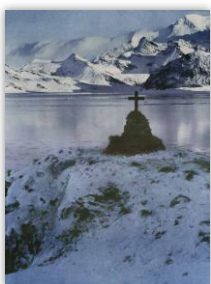
24. Shackleton's cairn and view across King Edward Cove, South Georgia, 5 May 1922



25. Shackleton's cairn and view across King Edward Cove, South Georgia, 5 May 1922



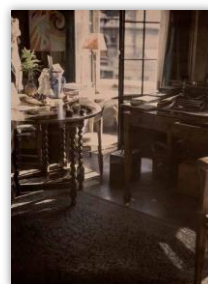
26. Shackleton's cairn and view across King Edward Cove, Mount Sugartop in the distance, South Georgia, 5 May 1922



27. Shackleton's cairn and view across King Edward Cove, Mount Paget in the distance, South Georgia, 5 May 1922



28. 6 May 1922, Shackleton's grave and wreaths laid on behalf of Lady Shackleton and her children, and Mr and Mrs John Quiller Rowett. Grytviken, South Georgia



29a. Interior. Probably London, about August 1921



29b. Interior. Probably London, about August 1921. A colour calibration strip can be seen on the table